



Nctig cevkxg ctgc eqpxgpkgpv hqt qrvkecn eqwrnkpi
 Nqy Fctm Ewttgpn
 Tgurqpf vq E/Dcpcf cpf 3532p o= N/Dcpcf
 Jki j tgnkcdknkv {

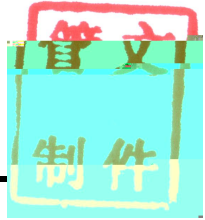
Pgct kphtctgf ugpuqtu
 Ncugt fkqfg cpf NGF rgygt oqpkvqt
 Pgct kphtctgf urgevtqueqr {
 Qrvkecn o gcuwtg o gpvu cpf ugpuqi

Absolute Maximum Ratings:

Parameter	Symbol	Min.	Max.	Unit
Tgxgtug Xqnvci g	X _T		42	X
Hqtyctf Ewttgpn	K _H		72	oC
Ocz0 Qrvkecn kprwv Rgygt	RocZ		52	oY
Qrgtcvki Vg o rgtcvwtg	V _{qr}	/62	- :7	
Uvqtcig Vg o rgtcvwtg	V _{vi}	/62	- :7	
Ngcf Uqnfgt Vg o rgtcvwtg			482	
Ngcf Uqnfgt Vkog			32	u

Characteristics Ta=25 unless otherwise noted

Param



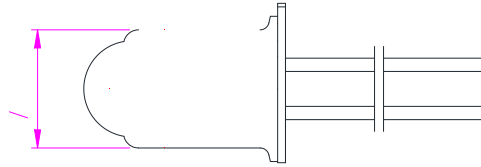
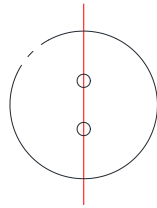
UW/23/3:/C/29/C2: J

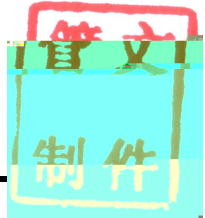
24

423:033043

4

5

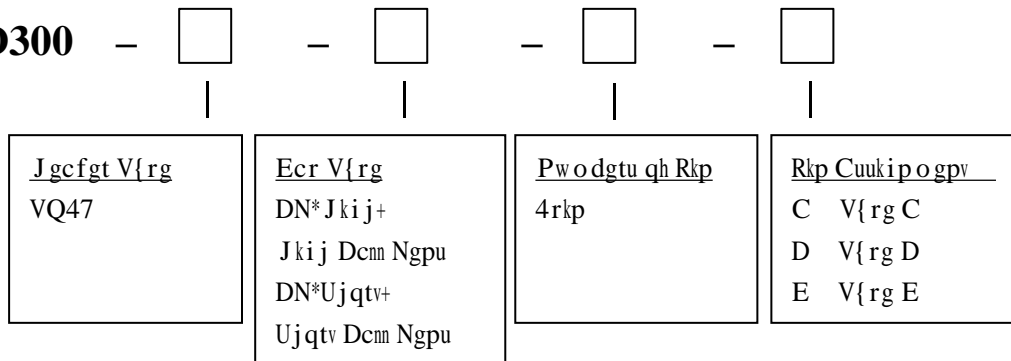




Rtqfwepcog	3*oo+	4*oo+	J3*oo+	N3*oo+	N4*oo+	Tgegxgf nkijv hqto
RF522/VQ47/DN*Jkij+/4rkp/C	407	30;8	5057	3409	3409	Fkxgtigpv nkijv
RF522/VQ47/DN*Jkij+/4rkp/D	407	30;8	5057	3602	3602	
RF522/VQ47/DN*Jkij+/4rkp/E	407	30;8	5057	37074	39074	
RF522/VQ47/DN*Ujqt+/4rkp/C	407	30;8	40;4	3409	3409	Rctemgn nkijv
RF522/VQ47/DN*Ujqt+/4rkp/D	407	30;8	40;4	3602	3602	
RF522/VQ47/DN*Ujqt+/4rkp/E	407	30;8	40;4	37074	39074	

- Uvcfctf cpf ewuvqo fgukipu vq uwkv {qwt u{uvgo u}

PD300



Statement

UCP/W qypu vjg cwvjqtkv{ hqt hkpcn gzrncpevkqp qh cmn kphqto cvkqp eqpvckpgf kp vjku fqewogpv. yjkej ku uwdlgev vq ejcpig ykvjqww pqvkeg0 Cnn vjg kphqto cvkqp ycu qdvckpgf kp rctvkewnct gpxktqogpvu= cpf UCP/W yknn pqv dg tguqpukdng hqt vjg rgthqto cpeg qh vjg ewuvqogtu0 cevwn qrgtcvki gpxktqogpv0 Cnn kphqto cvkqp eqpvckpgf ku qpn{ hqt vjg wugtu) tghgtpeg cpf ujcmn pqv dg eqpukfgtgf cu ycttcpygf ejctcevgtkuvkeu UCP/W yknn pqv dg nkcdng hqt fcocigu ctkukpi fktgevn{ qt kp fktgem{ yjkej htqo cp{ wug qh vjg kphqto cvkqp eqpvckpgf kp vjku fqewogpv0

Contact Information:

Cfftguu< P723/727 Ygk{g Dnfi0. Zkco gp Rkqpggtkpi Rctm Hqt Qxgtugcu Ejkpug Uejqntu. Zkco gp. Hwlkcp. Ejkp

Vgn< - :8/7;4/5: ; :823. 5: ; :82: . 753:222

Hcz< - :8/7;4/79257: :

Go ckn< ucngu B ucp/w0eqo

jwr<ll y y0ucp/w0eqo